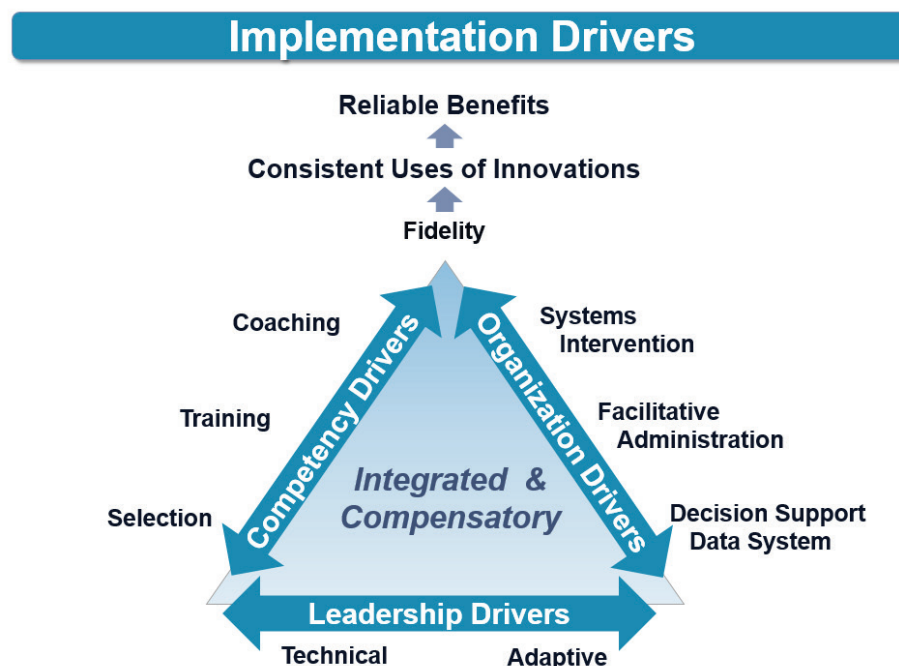


## Activity 3.1 EBP Drive Around

Jot down different EBPs/EIs that you have experienced, participated in or led and pick one of those initiatives that has been in place the longest. Then, “drive around” the Implementation Drivers diagram and reflect on the questions provided.

### Instructions

1. Jot down different EBPs/EIs that you have experienced, participated in or led.
2. Now pick one of those initiatives that has been in place for at least one year, and “drive around” the Implementation Drivers diagram below. Alone, or with your team, reflect on the questions on page 2.



The Active Implementation Hub, AI Modules and AI Lessons are developed by the State Implementation & Scaling-up of Evidence-based Practices Center (SISEP) and The National Implementation Research Network (NIRN) located at The University of North Carolina at Chapel Hill's FPG Child Development Institute. Copyright 2013.

## Reflection Questions

- **Reliable Benefits\Consistent Uses of Innovations**  
How long has the EBP/EII been in place? How many students are benefitting? What data tell you they are benefitting?
  
- **Performance Assessment**  
Are fidelity data available? If so, what data? Who has access to it? How is it used?
  
- **Competency Drivers**  
Is timely and skill-based training and coaching available? How are new staff brought on board and how do they learn how to use the EBP/EII?

- Organizations Drivers

Is there a team in place that focuses on the implementation process? Are they supported by the system? Has the work environment been adjusted (e.g. scheduling, materials, time) to support the use of the EBP/EII? Does the team use data to drive decision making?

- Leadership Drivers

How are challenges identified, addressed and managed?

---

How did you do? Congratulations! You have just experienced just a few of the thought processes that occur during Implementation Team meetings! Might one of the teams you thought of in Activity 3.1 be asking these same questions?